

DELUXE STYLER Braid, Bead & Twist

Salon Style
Hair Creations!

SIMPLE
& EASY!
3 IN 1
Super
Styler!



Super Styler Hair Designer!

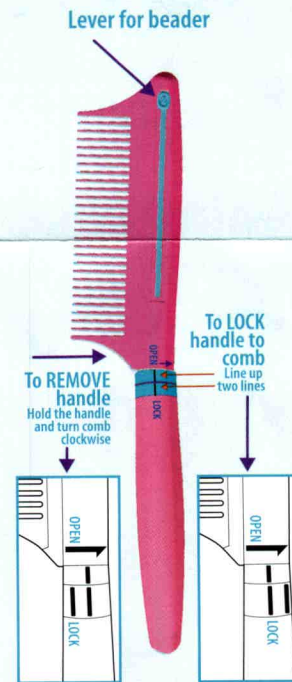
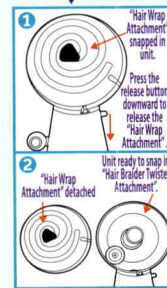
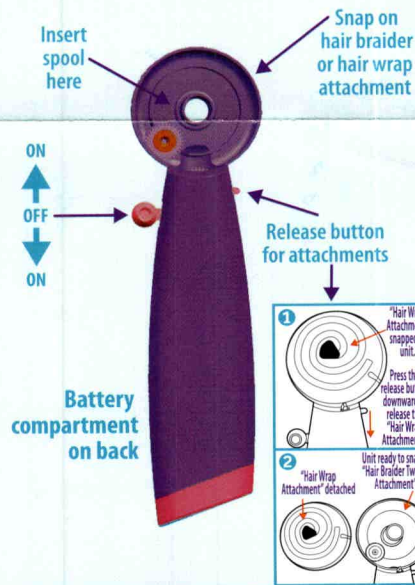
To enjoy this activity,
read the instructions before starting.



Add the Shimmer'n Sparkle Sticker to your Styler

Set Up

Install 2 "AA" batteries (not included).
You will need a Phillips Screwdriver
(not included).



IMPORTANT

Please comply with the operational precautions.
Adult supervision and assistance required.

Requires 2 x AA Batteries. (Batteries Not Included).

- Alkaline batteries recommended.
- Rechargeable batteries must only be recharged under adult supervision.
- Rechargeable batteries must be removed from the toy before recharging.
- Non-rechargeable batteries must not be recharged.
- Different types of batteries, or new and used batteries must not be mixed.
- Only batteries of the same or equivalent type as recommended should be used.

- Batteries should be replaced by an adult.
- Batteries must be inserted following the correct polarity.
- Exhausted batteries should be removed from the product.
- The supply terminals must not be short-circuited.
- Batteries should be removed from the product when not in use.
- Do not dispose of batteries in fire.

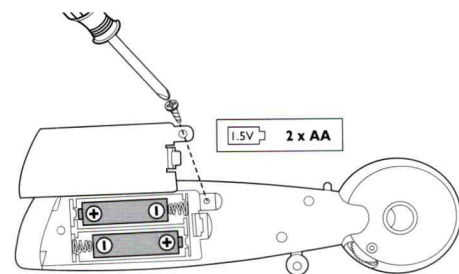
WARNING! CHOKING HAZARD.

Not suitable for children under 36 months. Choking hazard (Small Parts and Small ball), strangulation hazard (long cord). Please remove all packaging attachments before giving this product to a child. Please use discretion if making purchases for children younger than the age recommended on this package. At the end of the useful life of this product do not dispose in normal household waste. Check with your local authority or responsible disposal centre and submit to the collection point for the recovery and recycling of electrical and electronic equipment. Product specifications, colour and contents may vary from those illustrated. **IMPORTANT:** Please retain packaging/instructions and purchase details for future reference as they contain important information.

How to Install the Batteries

Requires 2 "AA" alkaline batteries (not included).
BATTERIES MUST ONLY BE INSTALLED BY AN ADULT.

- 1 Make sure power button is OFF.
- 2 The battery compartment is on the back of the machine.
- 3 Use a Phillips head screwdriver (not included) to remove screw.
- 4 Insert 2 AA batteries in the compartment as marked on the inside of the battery compartment.
- 5 Replace cover and tighten screw.



Item: Shimmer N Sparkle Deluxe Styler Braid, Bead & Twist
Item Number: 65576
Age Grade: 8 years plus

Follow us on
cra-z-artshop.com

© 2012 Cra-Z-Art® All Rights Reserved. LaRose Industries, LLC, d/b/a Cra-Z-Art, Randolph, NJ 07869 USA At Cra-Z-Art® we guarantee our quality. If you are not completely satisfied with our product, please call 1-800-Cra-Z-Art or visit www.Cra-Z-Art.com.

BRAID IT!

3 Easy steps to create Twisty Braids. Snap in the braider twister attachment and let's get twisting!

1. Set up

Take a small section of hair and divide it into two.

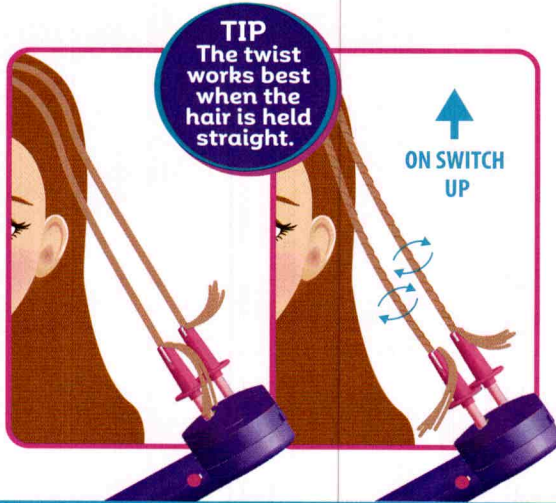
Insert each hair section into a clamp. Close the clamp 2" from the hair ends.



2. Pre-Twist

Pull the Styler away from your head so the hair is now taut and straight.

Press the ON switch UP, until the hair is fully twisted.



3. Twisty Braids!

Press the ON switch DOWN.

You will see a twisty braid forming.

When fully twisted, gently remove your hair from the clamps. Add a hair elastic or a bead stopper to hold the ends.



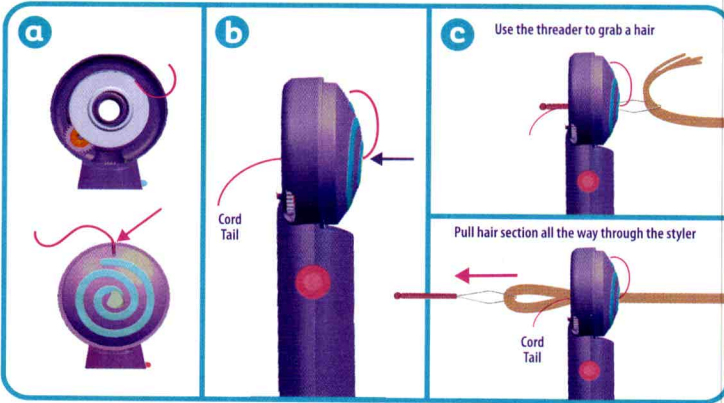
Bead stoppers open and close.

WRAP IT!

Select a small section of hair and a cord to wrap onto your hair. Let's get wrapping!

1. Set up

- Insert the cord spool (ridges down). Snap in the hair wrap attachment. Pull 2" of cord through the slot.
- Thread the cord through the center of the styler.
- Use the threader to pull the hair section you want wrapped through the center of the styler. Then position the styler where you want the wrap to start.

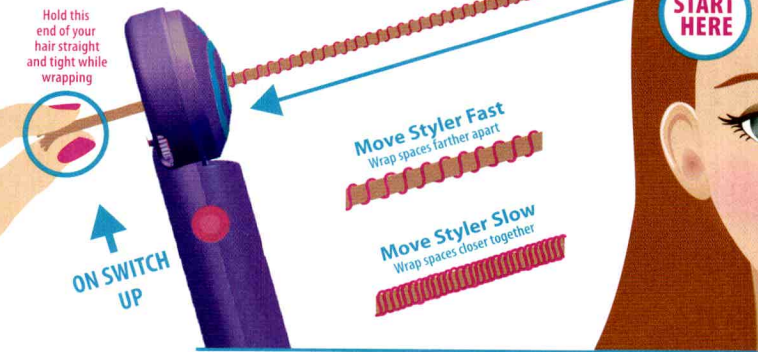


2. Wrap

Hold the ends of your hair taut and straight.

Press the ON switch UP.

Keep the hair taut/straight and move the Styler slowly to the ends of the hair.



3. When Done

Gently remove the styler with the cord from your hair section.

Cut the cord (careful to not cut your hair).

Add a stopper or elastic to hold the wrapped cord to your hair.

NOTE: Trim the free end of cord as short as possible after add the stopper or elastic to the end of cord.

BEAD IT!

Use the hair beader comb to add beads! Select a small section of hair and let's bead!

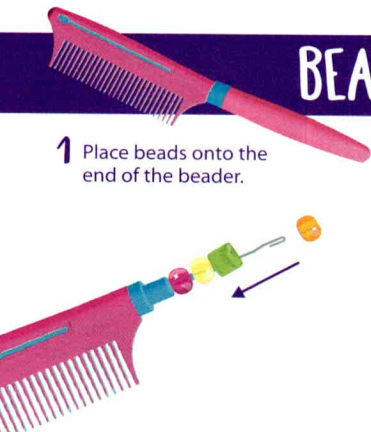
1 Place beads onto the end of the beader.

2 Loop hair into the hook. Place hook 1" to ends of hair.

3 Push the lever all the way up. This pushes the beads onto your hair.

Repeat!

4 When done, carefully remove your hair from the hook and add a stopper bead.



So Pretty!